

UNIT, DIRECT SUPPORT, AND GENERAL SUPPORT MAINTENANCE
REPAIR PARTS AND SPECIAL TOOLS LIST
TRUCK, 5-TON, 6X6, M809 SERIES TRUCKS (DIESEL)

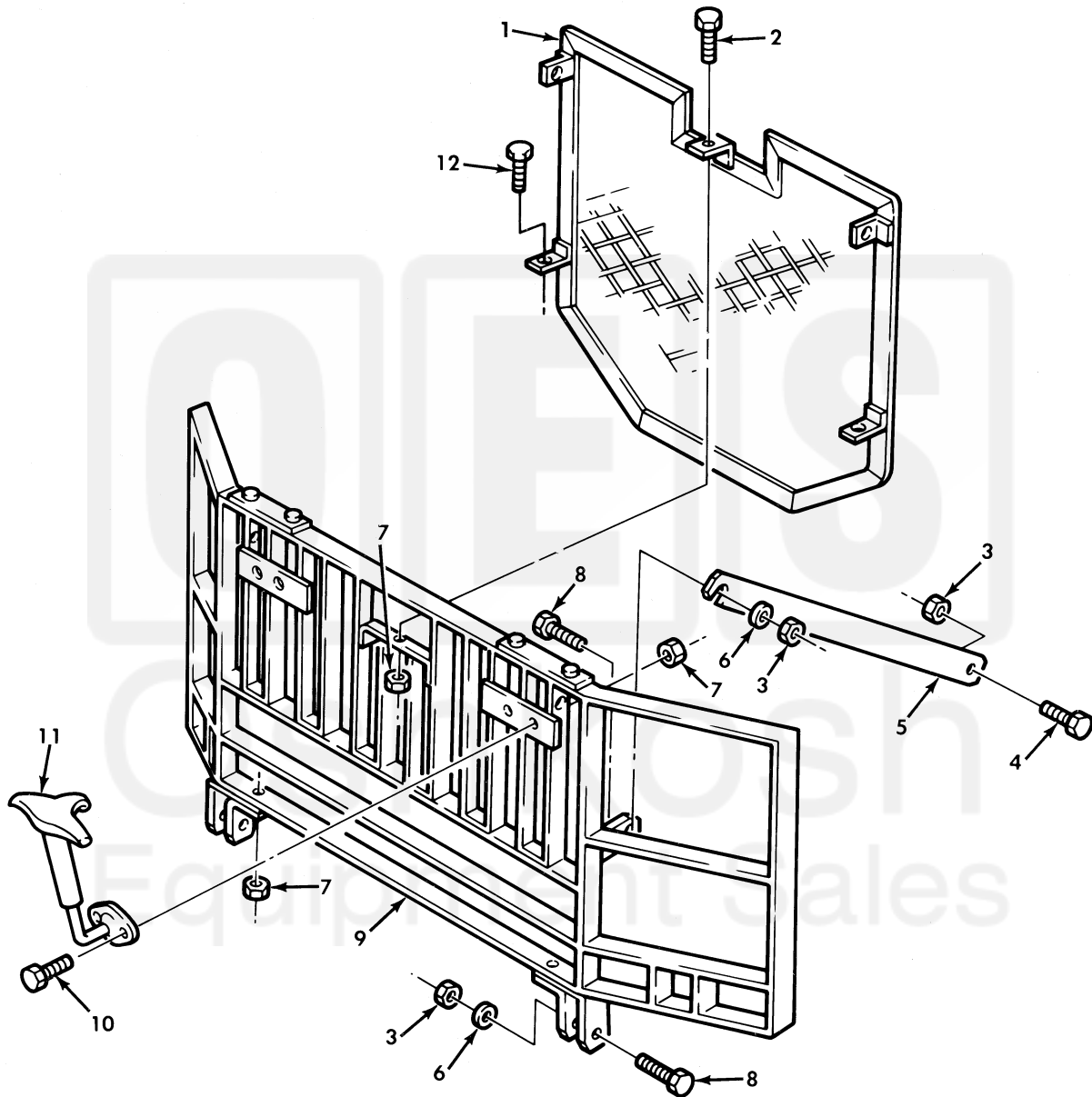


Figure 250. Stone and Brush Guard Assemblies and Mounting Hardware.

(1) ITEM NO	(2) SMR CODE	(3) NSN	(4) CAGEC	(5) PART NUMBER	(6) DESCRIPTION AND USABLE ON CODE (UOC)	(7) QTY
GROUP 1801 BODY, CAB, AND HOOD ASSEMBLIES						
FIG. 250 STONE AND BRUSH GUARD ASSEMBLIES AND MOUNTING HARDWARE						
1	PAOZZ	2540-00-783-7060	19207	11665794	GUARD, SPLASH, VEHICU.....	1
2	PAOZZ	5306-00-068-0513	18876	MS90727001-06	SCREW, CAP, HEXAGON H.....	3
3	PAOZZ	5310-00-062-4954	96906	MS21045-8	NUT, SELF-LOCKING, HE.....	6
4	PAOZZ	5305-00-719-5219	96906	MS90727-111	SCREW, CAP, HEXAGON H.....	2
5	PAOZZ	2510-00-408-4690	19207	11664427	STRAP, SUPPORT, BRUSH.....	2
6	PAOZZ	5310-00-809-5998	96906	MS27183-18	WASHER, FLAT.....	4
7	PAOZZ	5310-00-061-7325	96906	MS21045-4	NUT, SLFLKG HEXAGON.....	7
8	PAOZZ	5305-00-725-0154	96906	MS90727-112	SCREW, CAP, HEXAGON H.....	4
9	PAOZZ	2540-00-764-7979	19207	11665793	GUARD, BRUSH, RADIATO.....	1
10	PAOZZ	5305-00-267-8953	80204	B1821BH025F063N	SCREW, CAP, HEXAGON H.....	4
11	PAOZZ	2590-00-040-2075	19207	7539197	FASTENER, CYLINDER, S.....	2
12	PAOZZ	5305-00-267-8956	96906	MS90727-12	SCREW, CAP, HEXAGON H.....	2

END OF FIGURE

